

Relational Supply MILS to DLMS Migration Plan

***DLMS FED IC 856S, Priority Group I,
DOC ID AS1/AS2, AU1/AU2/AU3 and
D6R***



Agenda

- Development Approach
- Development Approach (Cont.)
- System Name, Business Function and Contact Information
- Transaction Flow Diagram
- Project Plan
- Questions

Development Approach

Due to the reduction in funds the approach is to create the database infrastructure to support current and future DLMS data elements. Although decomposition of *all* DLMS transactions for migration to RSupply would be preferred, it would require a significant amount of analysis and design consuming the funds provided and time allotted to complete the effort.

For this development phase the 856S DLMS (DT/TS) specific data sets will be addressed.

Currently, an 856 and D6R are generated for all repair components shipped to a trading partner. After detail design is completed we may pursue development of the RSupply applicable 527R transaction sets.

Development Approach (Cont.)

All major command projects are supported by a Project Management Office, Software Quality Assurance, Independent Verification and Validation (IV&V), Software Configuration Management (SCM), Information Assurance (IA) and systems. This project will consist of 13 support personnel. SSCN and its prime contractor are Capability Maturity Model (CMM) level III assessed organizations and use a Software Engineering Life Cycle (SELC) model and waterfall method for all development. The Microsoft Project tool and Earned Value Management (EVM) methodologies are used to track the triple constraints.

System Name, Business Functions and Contact Information

Relational Supply



Functions

- Inventory maintenance
- Onboard allowance maintenance
- Material procurement
- Receipt, custody, stowage, and issue
- Financials (NWCF, End-Use)

Afloat and Ashore

- Ships and Subs (all ship types; except MCM's, MHC's)
- NAS, MALS
- NSWC Dahlgren (ASP site)
- Schools, TYCOMs

Customers

- Sites 360
- Users 150,000+
 - Supply Officers
 - SK, Repair Parts Petty Officers
 - Department Heads, Division Officers

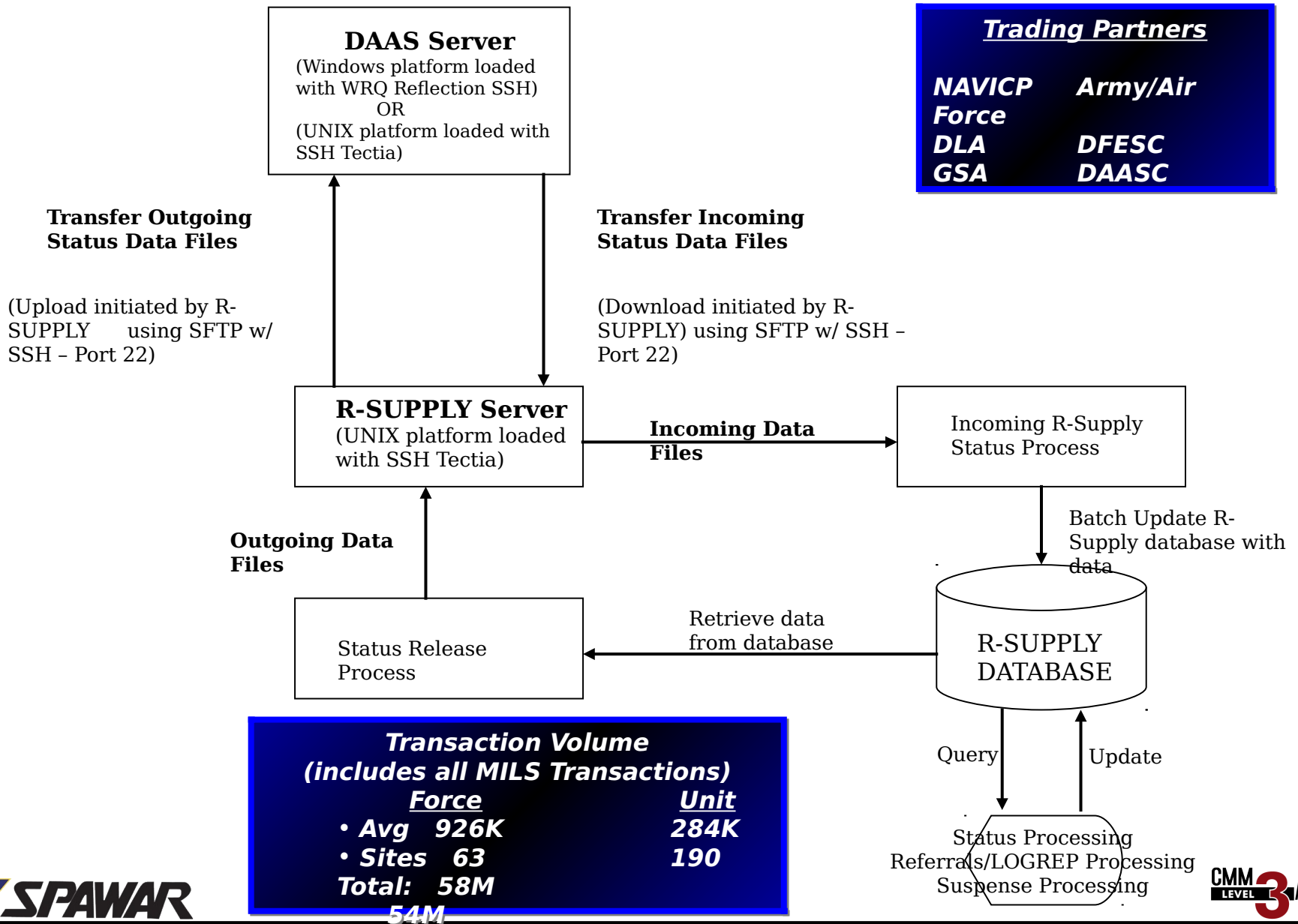
Point of Contacts:

*R*Supply Supervisor - Lou Borden, 757-443-0332,
lourdes.borden1@navy.mil

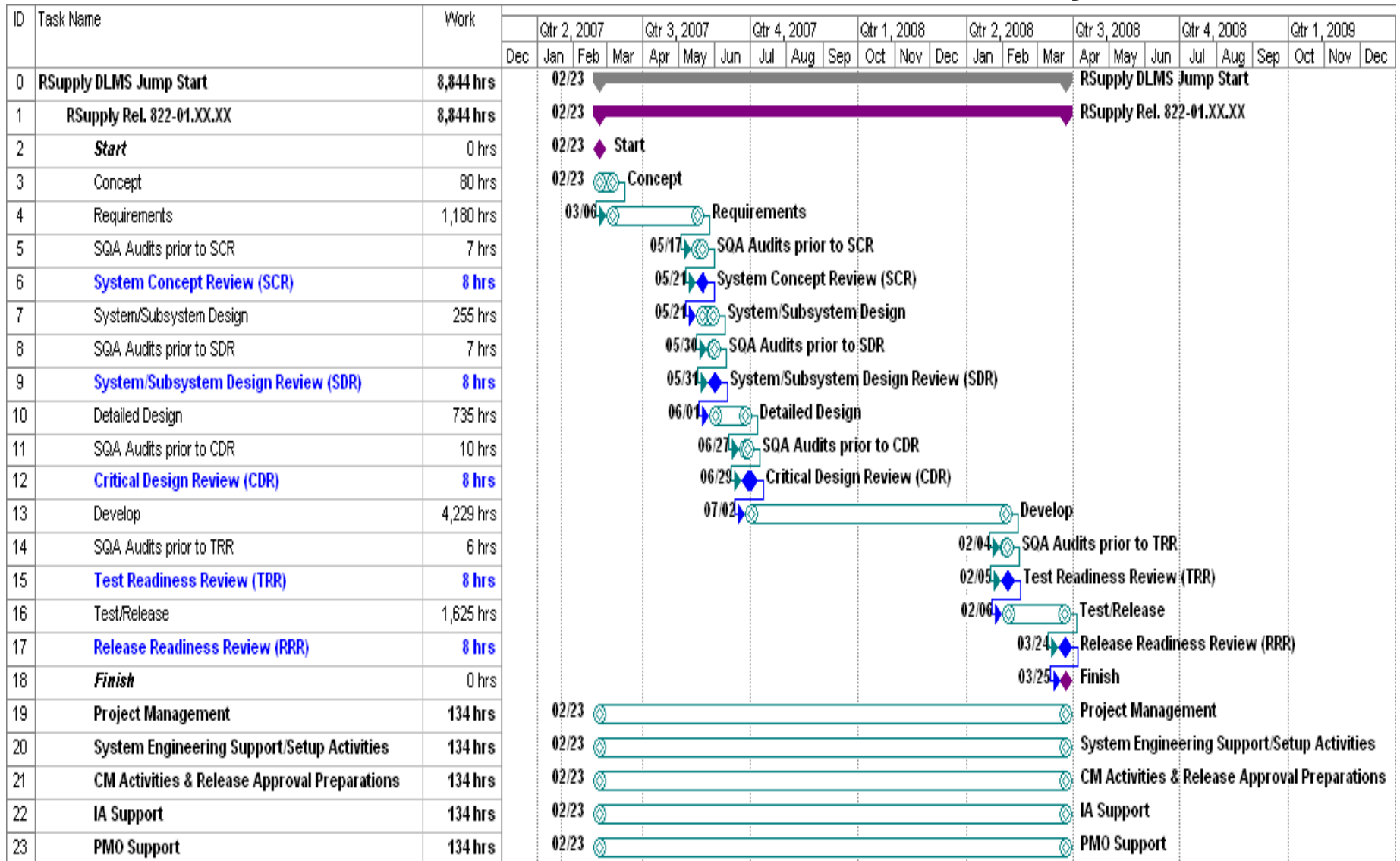
*T*eam Leader - Susan Bess, 757-443-0331,
susan.bess@navy.mil

*R*equirements Lead - Joseph Melendez, 757-0341,
joseph.melendez@navy.mil

Transaction Flow Diagram



Project Plan



Questions?

